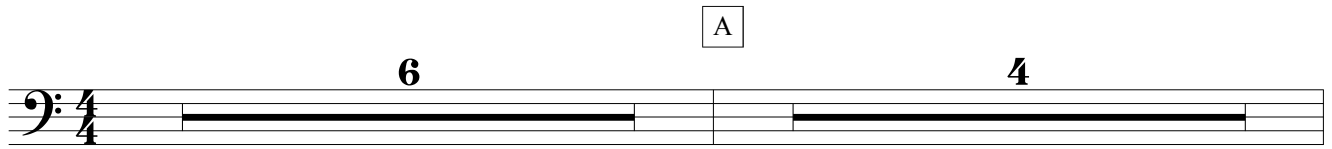


# Bicie serca

## 1. Życie w ciągłym pośpiechu

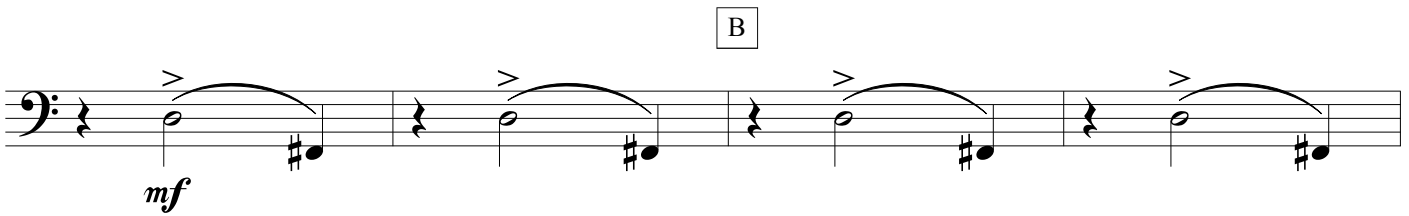
A

6 4



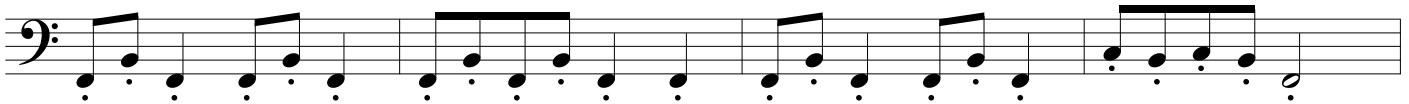
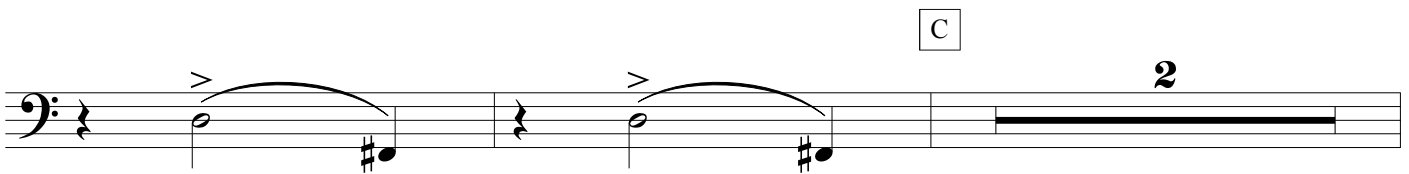
B

*mf*



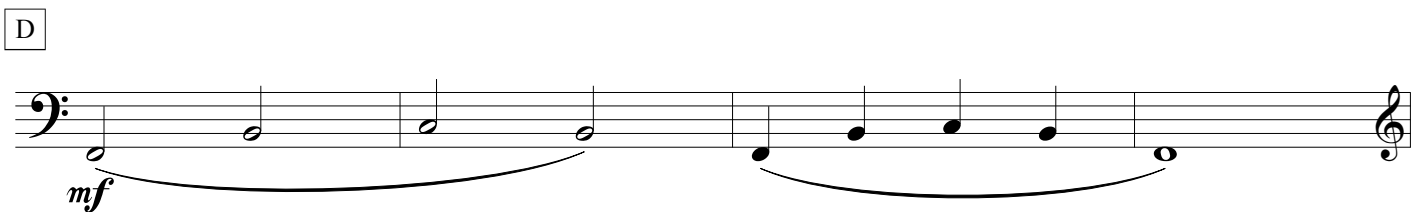
C

2



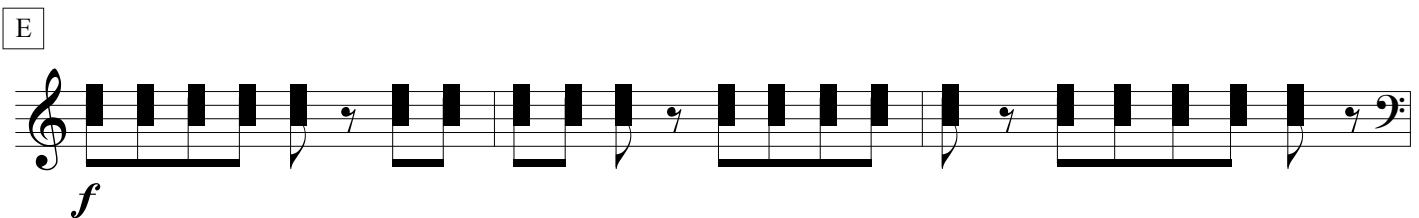
D

*mf*



E

*f*



Musical notation for exercise P, bass clef. The exercise consists of a continuous eighth-note pattern in the left hand, with a dynamic marking of *p* (piano).

F

Musical notation for exercise F, bass clef. The exercise features a series of four measures, each containing a half note with an accent (>) and a sharp sign (#) on the second line, followed by a quarter rest. The dynamic marking is *mf* (mezzo-forte).

G

Musical notation for exercise G, treble clef. The exercise consists of a continuous eighth-note pattern in the right hand, with a dynamic marking of *p* (piano).

H

Musical notation for exercise H, treble clef. The exercise consists of a continuous eighth-note pattern in the right hand.

I

Musical notation for exercise I, treble clef. The exercise consists of a continuous eighth-note pattern in the right hand.

J

Musical notation for exercise J, treble clef. The exercise consists of a series of five measures, each containing a quarter note followed by a quarter rest. The dynamic marking is *pp* (pianissimo), and the exercise concludes with the instruction *attaca*.

## 2. Niepokojące objawy

6 *uderzenie w fałdy miecha*

Musical notation for 'uderzenie w fałdy miecha' in 4/4 time. It consists of a six-measure phrase. The first measure contains a whole note chord. The second measure has a dotted quarter note followed by a quarter rest. The third measure has a quarter note followed by a quarter rest. The fourth measure has a dotted quarter note followed by a quarter rest. The fifth measure has a quarter note followed by a quarter rest. The sixth measure has a quarter note followed by a quarter rest.

A

*p*

2

Musical notation for section A, first staff. It features a six-measure phrase of eighth notes, followed by a two-measure phrase of a whole note chord.

*mf*

2

Musical notation for section A, second staff. It features a six-measure phrase of eighth notes, followed by a two-measure phrase of a whole note chord.

B

*f*

2

Musical notation for section A, third staff. It features a six-measure phrase of eighth notes, followed by a two-measure phrase of a whole note chord.

*klaster lewą ręką*

*ff* *p*

2

Musical notation for section A, fourth staff. It features a six-measure phrase of eighth notes, followed by a two-measure phrase of a whole note chord.

C *guzikiem do powietrza*

*ff* *p* *p*

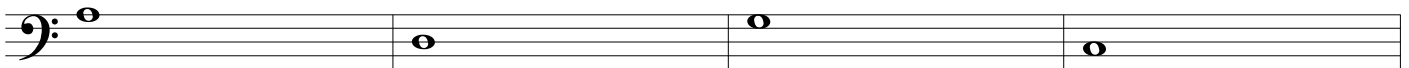
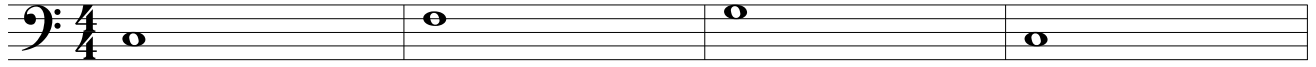
Musical notation for section A, fifth staff. It features a six-measure phrase of eighth notes, followed by a two-measure phrase of a whole note chord, and then a four-measure phrase of eighth notes with accents.

*mf*

Musical notation for section A, sixth staff. It features a four-measure phrase of eighth notes with accents, enclosed in repeat signs.

*powtarzać  
aż do całkowitego  
wyciszenia*

### 3. Spokojne życie (po zawale)



A



B

