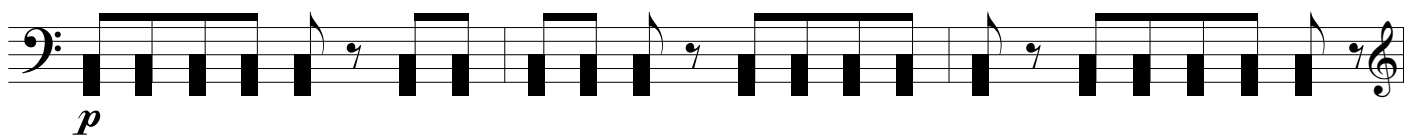
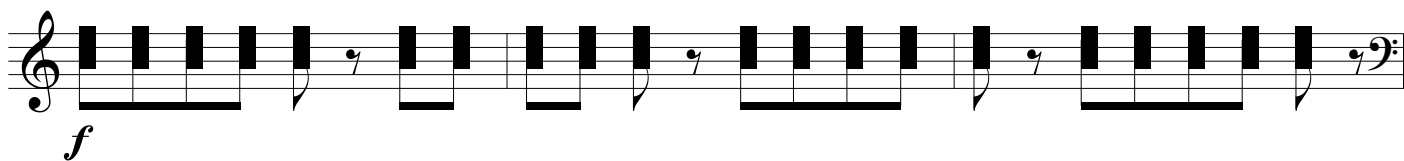
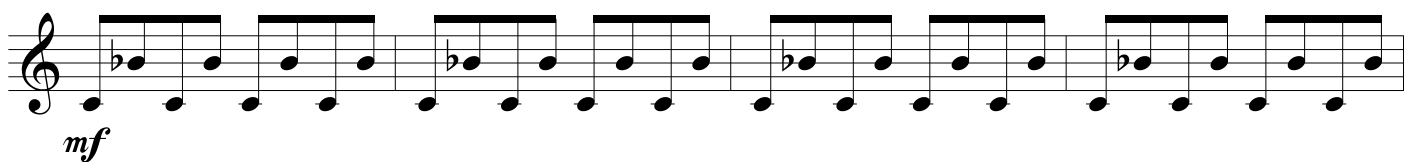


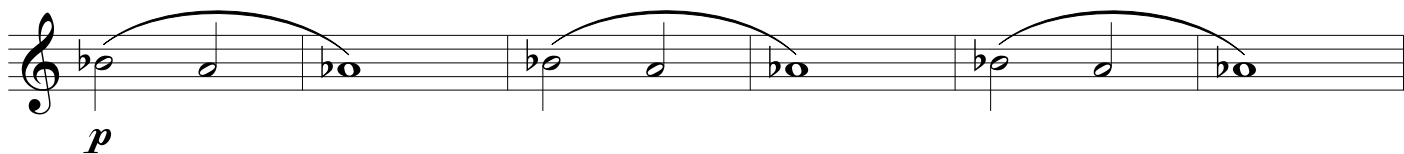
E



F



G

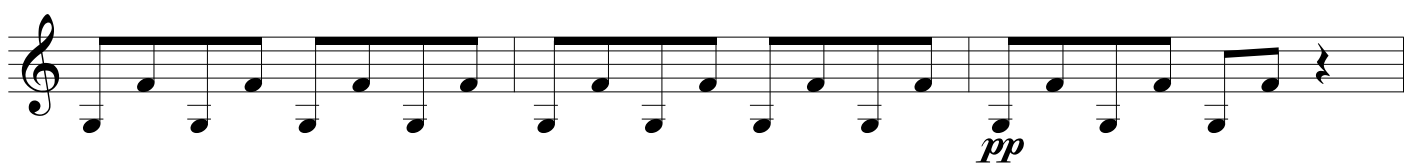


H

I



J



2. Niepokojące objawy

2 *uderzenie w fałdy miecha*

A

p

2 *mf* **2**

B

f

klaster lewą ręką

ff *p*

C

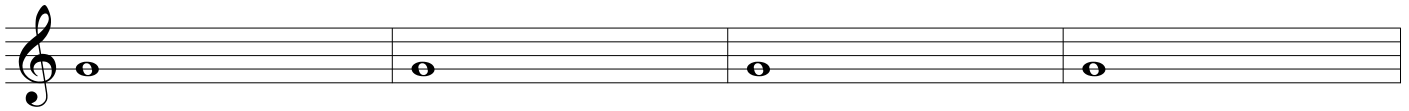
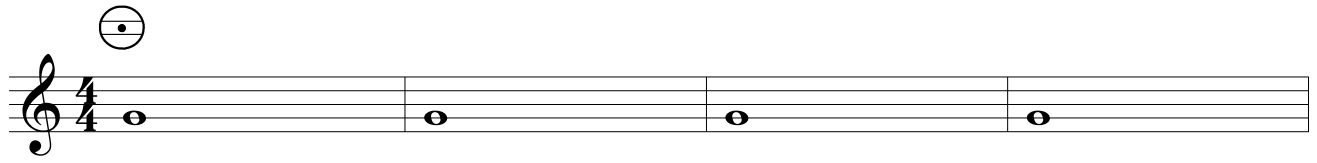
ff *p*

guzikiem do powietrza

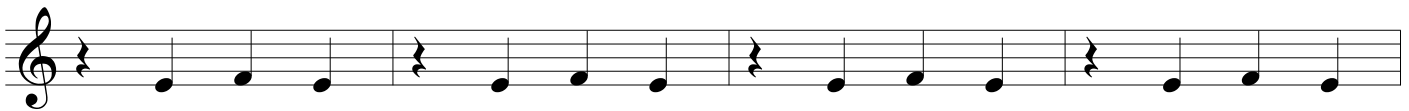
mf

*powtarzać
aż do całkowitego
wyciszenia*

3. Spokojne życie (po zawale)



A



B

